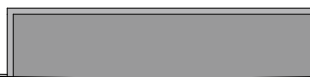
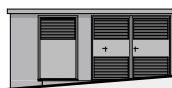


Parzellengrenze

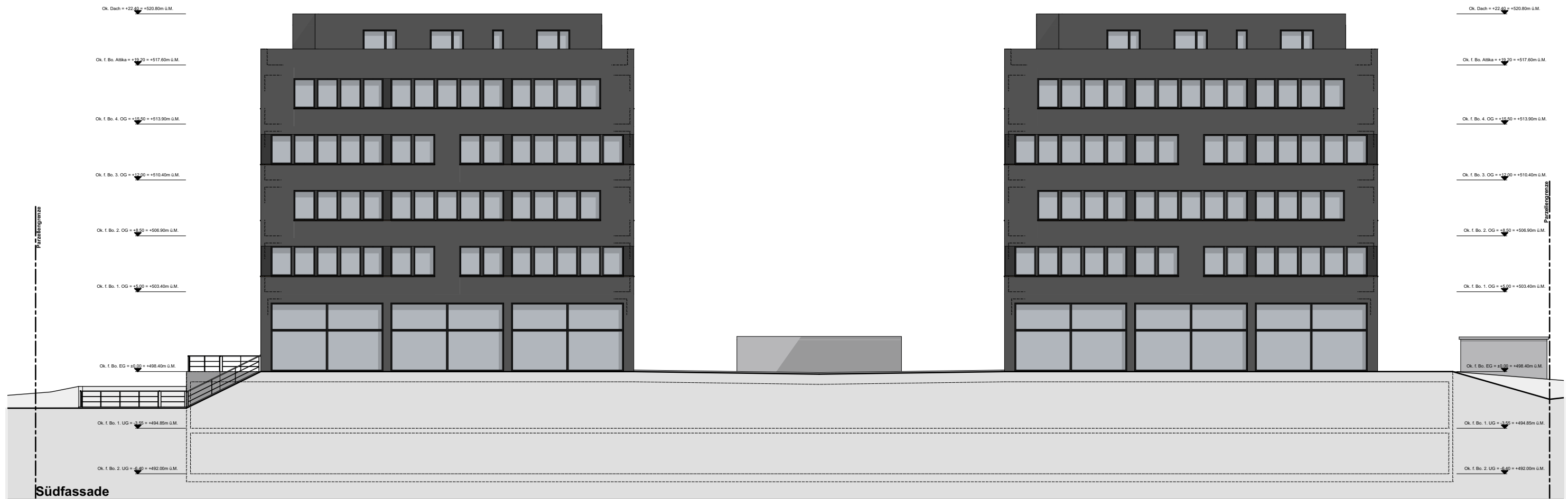
Nordfassade

Ok. Dach = +22.40 = +520.80m ü.M.  
Ok. f. Bo. Atika = +19.70 = +517.60m ü.M.  
Ok. f. Bo. 4. OG = +15.50 = +513.90m ü.M.  
Ok. f. Bo. 3. OG = +12.00 = +510.40m ü.M.  
Ok. f. Bo. 2. OG = +8.50 = +506.90m ü.M.  
Ok. f. Bo. 1. OG = +5.00 = +503.40m ü.M.  
Ok. f. Bo. EG = +0.00 = +498.40m ü.M.  
Ok. f. Bo. 1. UG = -3.55 = +494.85m ü.M.  
Ok. f. Bo. 2. UG = -6.40 = +492.00m ü.M.

Ok. Dach = +22.40 = +520.80m ü.M.  
Ok. f. Bo. Atika = +19.70 = +517.60m ü.M.  
Ok. f. Bo. 4. OG = +15.50 = +513.90m ü.M.  
Ok. f. Bo. 3. OG = +12.00 = +510.40m ü.M.  
Ok. f. Bo. 2. OG = +8.50 = +506.90m ü.M.  
Ok. f. Bo. 1. OG = +5.00 = +503.40m ü.M.  
Ok. f. Bo. EG = +0.00 = +498.40m ü.M.  
Ok. f. Bo. 1. UG = -3.55 = +494.85m ü.M.  
Ok. f. Bo. 2. UG = -6.40 = +492.00m ü.M.

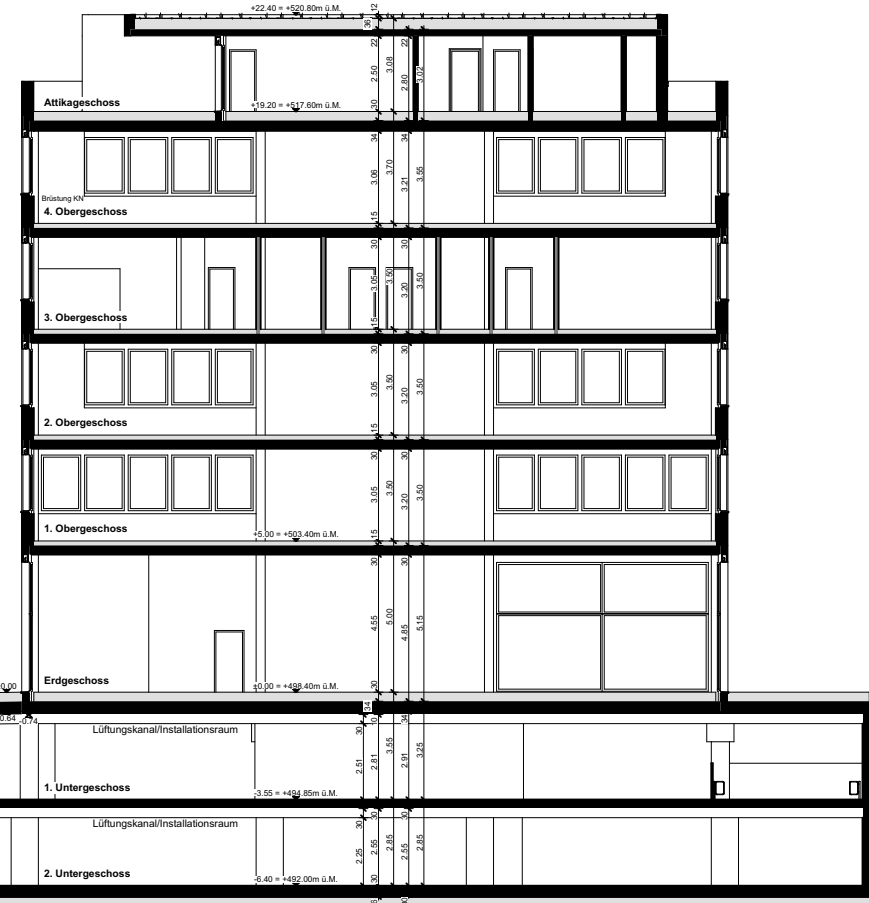
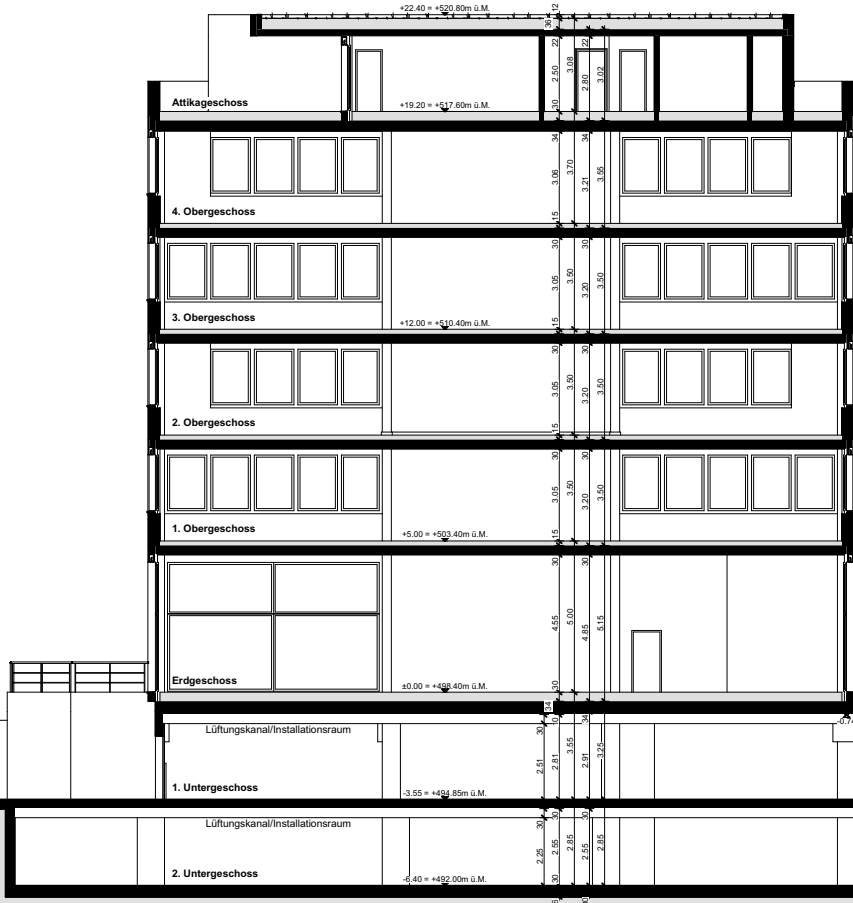








Westfassade



Parzellengrenze

Parzellengrenze

Schnitt A-A

gew. Terrain  
Best. Niveau